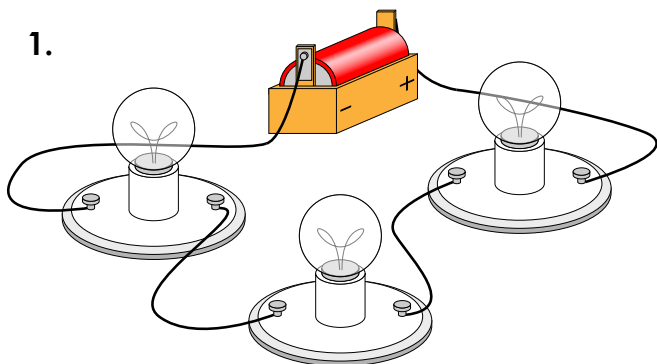


Name: _____

Series & Parallel Circuits

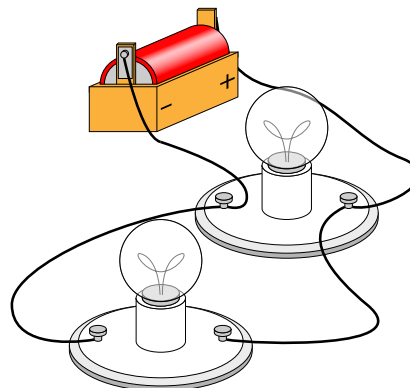
Tell whether each picture shows a series circuit or parallel circuit.

1.



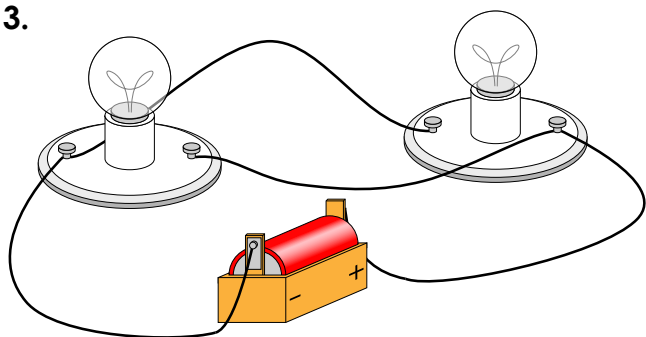
type: _____

2.



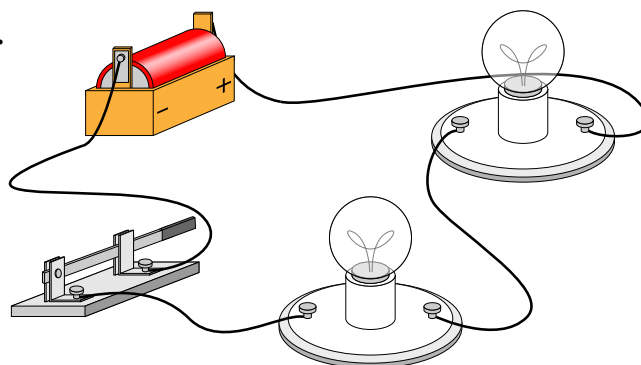
type: _____

3.



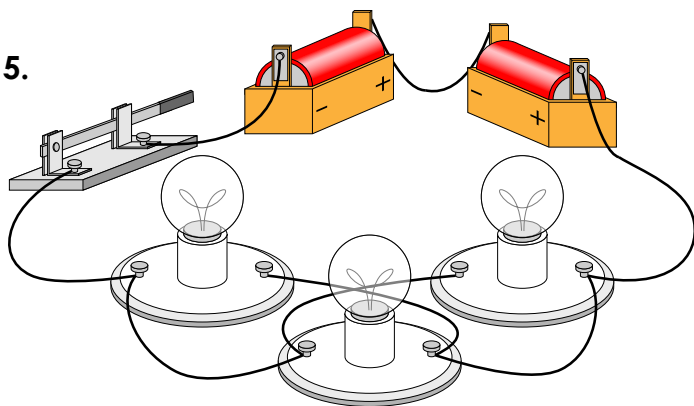
type: _____

4.



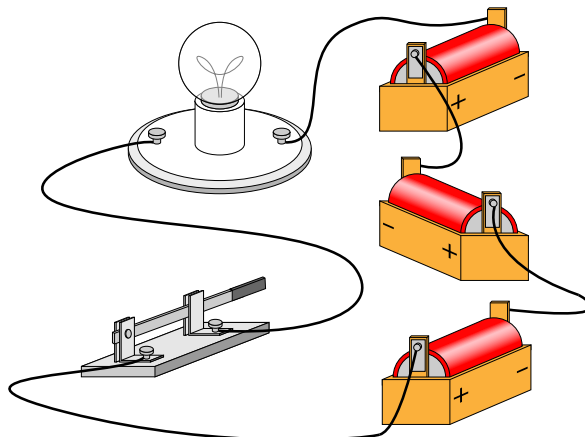
type: _____

5.



type: _____

6.



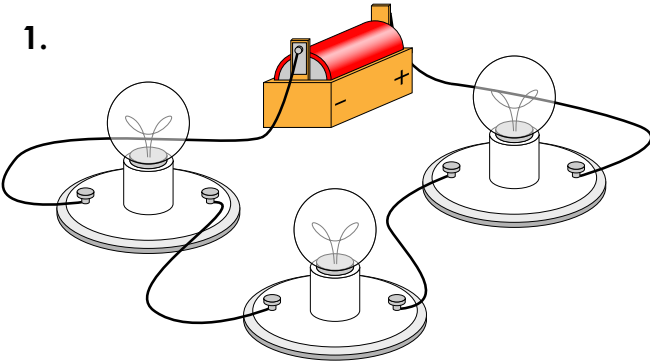
type: _____

ANSWER KEY

Series & Parallel Circuits

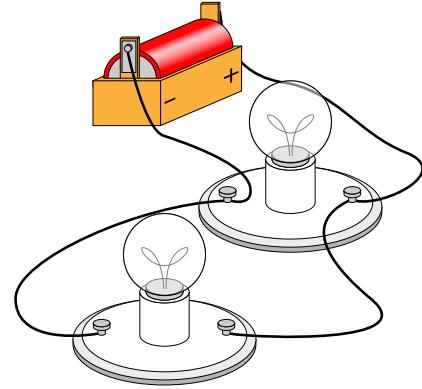
Tell whether each picture shows a series circuit or parallel circuit.

1.



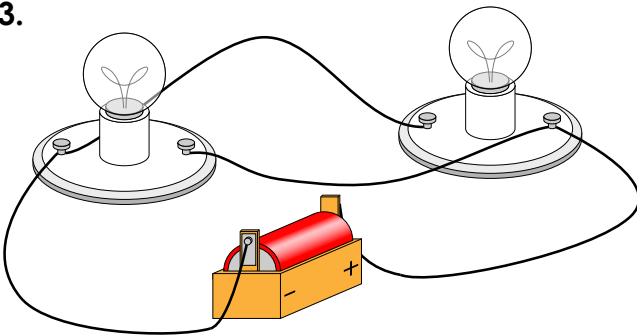
type: series circuit

2.



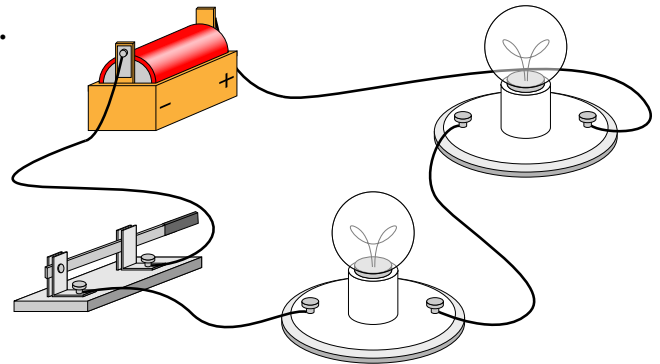
type: parallel circuit

3.



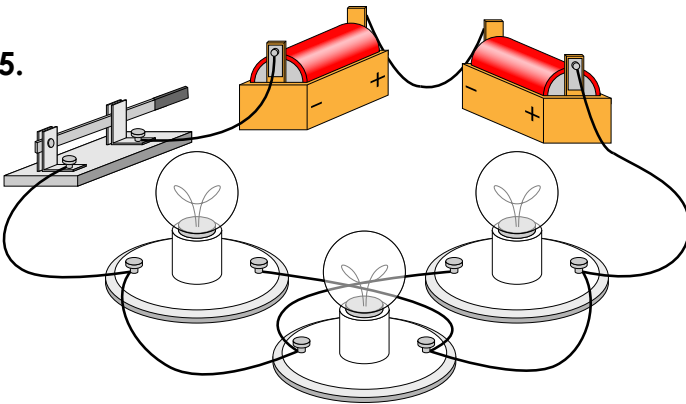
type: parallel circuit

4.



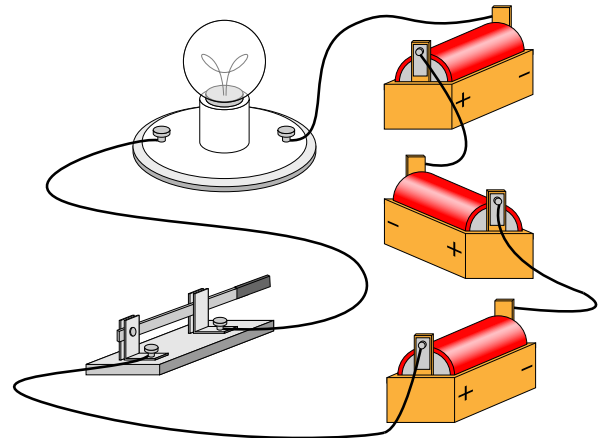
type: series circuit

5.



type: parallel circuit

6.



type: series circuit